

"SO MASTERFULLY PLOTTED YOU WON'T WANT TO PUT IT DOWN."

—TAHEREH MAFI, *New York Times* best-selling author



THIS IS NOT THE JESS SHOW

ANNA CAREY

BOOK CLUB
KIT

ALL THAT AND A BAG OF CHIPS

Transport your guests back to the '90s with a perfect arrangement of foods and drinks.

SWEET SNACKS

Dunkaroos
Fruit by the Foot
Fruit Roll-Ups
Cosmic Brownies

Scooby-Doo Fruit Snacks
Fruit Gushers
Rice Krispies Treats

SAVORY TREATS

Kraft Handi-Snacks
Lunchables
Bagel Bites

Totino's Pizza Rolls
Smucker's Uncrustables
Ellio's Pizza

BANGIN' BEVERAGES

Capri Sun
Sunny D
Hi-C

Yoo-hoo
Kool-Aid Bursts
Little Hug Fruit Barrels

SMELLS LIKE TEEN SPIRIT

Get in the '90s spirit with author Anna Carey's favorite songs from the decade. Listen to the full playlist at <https://spoti.fi/3sUUJ1l> or use this list as a starting point for your own playlist!

- "SEMI-CHARMED LIFE" by Third Eye Blind
- "NO DIGGITY" by Blackstreet featuring Dr. Dre and Queen Pen
- "DON'T SPEAK" by No Doubt
- "THESE ARE DAYS" by 10,000 Maniacs
- "WATERFALLS" by TLC
- "KILLING ME SOFTLY" by Fugees
- "NOT THE DOCTOR" by Alanis Morissette
- "BUDDY HOLLY" by Weezer
- "THE RAIN (SUPA DUPA FLY)" by Missy Elliott
- "32 FLAVORS" by Ani DiFranco
- "BREAKFAST AT TIFFANY'S" by Deep Blue Something
- "CRIMINAL" by Fiona Apple
- "TORN" by Natalie Imbruglia
- "DON'T LOOK BACK IN ANGER" by Oasis

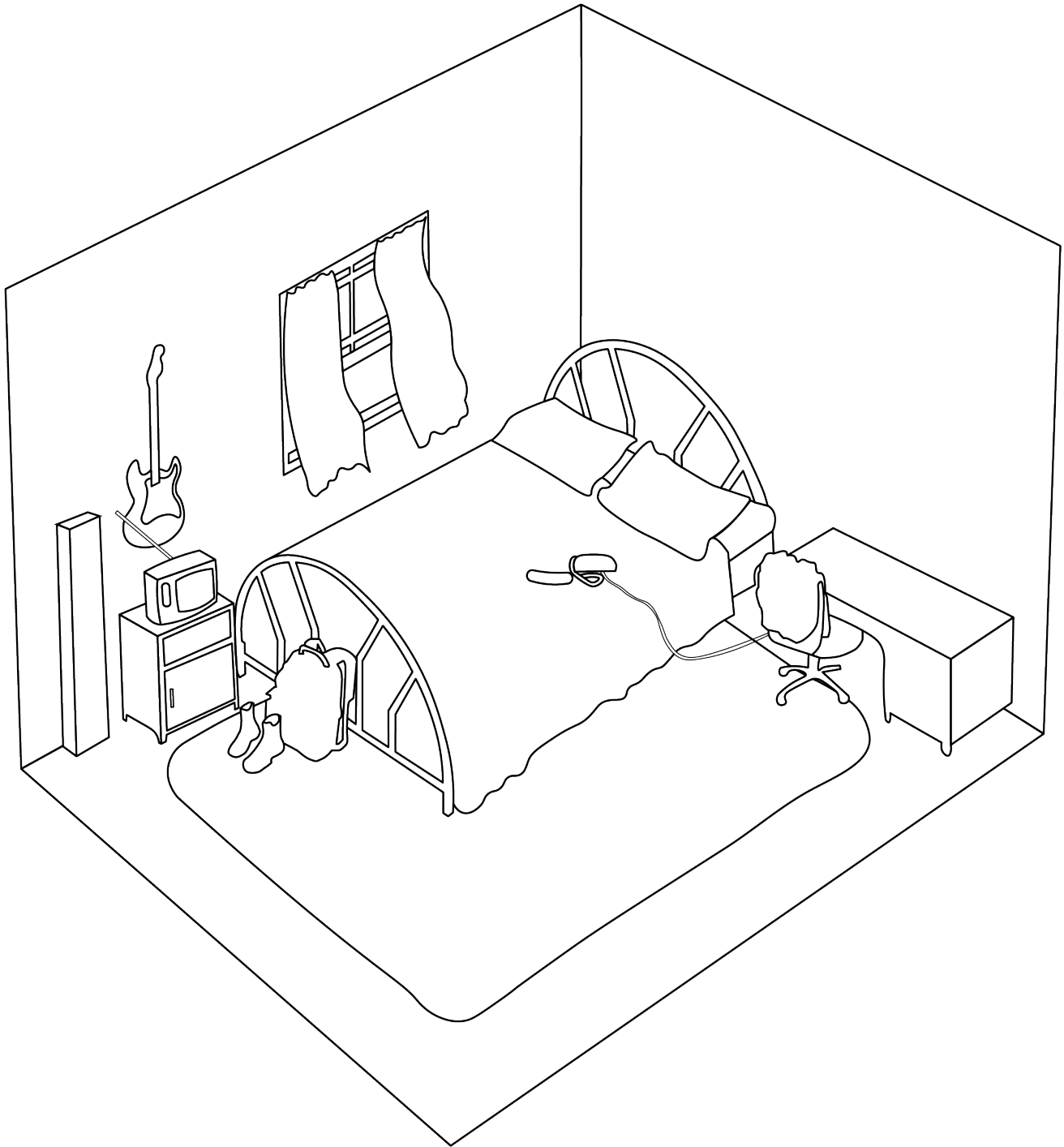
DISCUSS THIS IS NOT THE JESS SHOW!

Review the following questions to help jump-start conversation about *This Is Not the Jess Show*.

- 1 *This Is Not the Jess Show* is a dark look into reality TV, exploring the marketing and monetizing of an unaware participant's life. What do you think Carey is trying to say through this depiction?
- 2 Jess's narrative is told from the first-person point of view. How do you think this choice impacted your perception of the story?
- 3 Over the course of her escape from the *Stuck in the '90s* set, Jess bonds with Kipps, an actor playing her classmate. What did you think of their relationship?
- 4 How did your feelings shift after discovering the roles Jess's family members played in the production of *Stuck in the '90s*? Do you feel her parents or Sara were justified in their actions?
- 5 As Jess explores more of the world outside Swickley, she's exposed to futuristic tech like self-driving cars. Do you think Carey's depiction of the 2030s is a realistic glimpse of the years to come?
- 6 In the 2030s, social media plays a role in the marketing of reality TV to an even greater degree than it does today. How do you think social media concepts like influencer culture separate younger generations from older ones?
- 7 There are many small and large plot twists scattered throughout the narrative. Which did you enjoy the most? Which shocked you the most?
- 8 Discuss this novel in relation to reality TV you've seen. What elements of reality TV has Carey expanded upon, discarded, or added to the concept? Do you think she was successful in conveying how and why people get swept up in reality TV?
- 9 *This Is Not the Jess Show* depicts a nostalgic reality TV show set in the 1990s. If you're familiar with that era, are what were some of your favorite '90s references? What '90s callback do you wish had made it into the book but didn't?
- 10 What do you think of the ending? What do you hope to see in the sequel, *This Is Not the Real World*?

DECOMPRESS WITH COLORING!

Color in Jess's room while you discuss the reading questions with the group.



WHAT'S THE 411?

Use these printable trivia cards to test how well your group know the '90s.

Correct answers are highlighted in pink.

WHICH IS NOT A MARIAH CAREY SONG?

- A. "Beneath the Stars"
- B. "My All"
- C. "One Sweet Day"
- D. "Without You"

WHICH IS NOT A LINE IN "RUMP SHAKER"?

- A. "I'm feeling dandy, more than randy"
- B. "I like the way you comb your hair"
- C. "And now make the booty stop"
- D. "Ticklin' you around Delaware"

WHAT YEAR DID MY BEST FRIEND'S WEDDING COME OUT?

- A. 1995
- B. 1996
- C. 1997
- D. 1998

WHAT HAPPENED ON THE DINOSAURS SERIES FINALE?

- A. Mass extinction
- B. Robbie goes to college
- C. Ethyl, the grandmother, dies
- D. WESAYSO files for bankruptcy

WHAT YEAR DID THE SONG "GOOD RIDDANCE (TIME OF YOUR LIFE)" BY GREEN DAY COME OUT?

- A. 1994
- B. 1995
- C. 1996
- D. 1997

DENISE HUXTABLE FROM THE COSBY SHOW IS.....

- A. The oldest child
- B. The second oldest child
- C. The second youngest child
- D. The youngest child

WHICH IS NOT A BATH + BODY
WORKS SCENT?

- A. Plumeria
- B. Juniper Breeze
- C. Cucumber Melon
- D. Orchid Blossom

THE SINGER JEWEL'S LAST NAME
IS...

- A. Kilcher
- B. Williams
- C. Harmon
- D. Fletcher

WHO IS NOT A MEMBER OF
NO DOUBT?

- A. Tom Dumont
- B. Brent Carlisle
- C. Adrian Young
- D. Tony Kanal

IN HOW STELLA GOT HER GROOVE
BACK, STELLA IS...

- A. A stockbroker
- B. An advertising executive
- C. A publicist
- D. A lawyer

IN TITANIC, WHAT IS ROSE'S FULL
NAME?

- A. Rose Dewitt Bukater
- B. Rose Dewitt Hartford
- C. Rose Dewitt Hockley
- D. Rose Dewitt Dawson

IN WHAT YEAR DID KURT COBAIN
DIE?

- A. 1991
- B. 1992
- C. 1993
- D. 1994

IN MY SO-CALLED LIFE, WHAT
COLOR DID ANGELA DYE HER HAIR?

- A. Crimson Sunset
- B. Crimson Glimpse
- C. Crimson Glow
- D. Crimson Tide

THE TOY STRETCH ARMSTRONG
STRETCHED UP TO.....

- A. 5 feet
- B. 6 feet
- C. 7 feet
- D. 8 feet

WHO WAS NOT A GUEST STAR ON
FRIENDS?

- A. Cole Sprouse
- B. Helen Hunt
- C. Matthew Broderick
- D. Hugh Laurie

WHAT LANGUAGE DO FURBIES
SPEAK?

- A. Furbish
- B. Furbese
- C. Furbian
- D. Furbi

WHICH IS NOT A SONG ON THE
SOUNDTRACK TO BAZ LUHRMANN'S
ROMEO + JULIET?

- A. "Little Star"
- B. "Everybody's Free"
- C. "Beautiful Girl"
- D. "Kissing You"

IN BLOSSOM, BLOSSOM'S OLDEST
BROTHER IS.....

- A. Tony
- B. Brian
- C. Ted
- D. Joey

WHO NEVER APPEARED IN A "GOT MILK?" AD?

- A. Kate Moss
- B. Whoopi Goldberg
- C. Austin Powers
- D. Luke Perry

THE SINGER BRANDY'S LAST NAME IS.....

- A. Arnold
- B. Hobbes
- C. Anderson
- D. Norwood

WHO IS NOT NAMED IN ADAM SANDLER'S "THE CHANUKAH SONG?"

- A. James Caan
- B. Your friend Veronica
- C. OJ Simpson
- D. Kurt Russell

WHERE ARE THE MCCALLISTER'S VACATIONING IN HOME ALONE 2?

- A. Miami
- B. New York City
- C. Orlando
- D. San Francisco

DESTINY'S CHILD WAS ORIGINALLY CALLED.....

- A. The Only Onez
- B. Fated
- C. Girl's Tyme
- D. The Dreamers

WHAT IS THE REAL NAME OF CHILLI, FROM TLC?

- A. Sherri Greene
- B. Rozonda Thomas
- C. Crystal Jones
- D. Gabrielle Clark

XENA: WARRIOR PRINCESS FIRST
AIRED IN.....

- A. 1994
- B. 1995
- C. 1996
- D. 1997

THE CAST OF DAWSON'S CREEK
MODELED FOR WHICH CATALOG?

- A. L.L. Bean
- B. Abercrombie & Fitch
- C. GAP
- D. J. Crew

WHO VOICED STUART LITTLE IN THE
1999 FILM?

- A. Jonathan Lipnicki
- B. Tom Hanks
- C. Scott Weinger
- D. Michael J. Fox

WHICH MUSIC VIDEO HAD AN
ABUNDANCE OF COCKROACHES?

- A. "Sabotage"
- B. "Virtual Insanity"
- C. "Bittersweet Symphony"
- D. "My Name Is"

THE NANNY RAN FOR.....

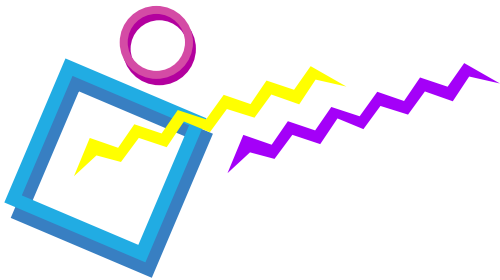
- A. 4 seasons
- B. 5 seasons
- C. 6 seasons
- D. 7 seasons

IN WHAT YEAR DID SLEEPLESS IN
SEATTLE COME OUT?

- A. 1993
- B. 1994
- C. 1995
- D. 1996

JESS FLYNN'S TOP 5 FROM THE '90s

Explore the '90s with Jess Flynn's top 5 favorites from the decade!



ALBUMS

- (WHAT'S THE STORY) MORNING GLORY? by Oasis
- JAGGED LITTLE PILL by Alanis Morissette
- THE MISEDUCATION OF LAURYN HILL by Lauryn Hill
- TIDAL by Fiona Apple
- LITTLE EARTHQUAKES by Tori Amos

TV SHOWS

My So-Called Life

The Fresh Prince of Bel-Air

Party of Five

Dawson's Creek

Sister, Sister

CHILDHOOD TOYS

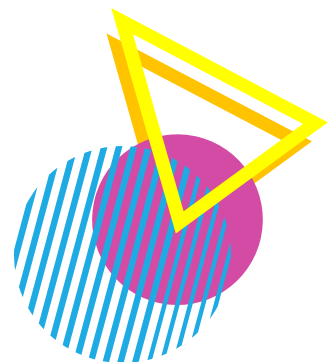
Polly Pocket

Troll dolls

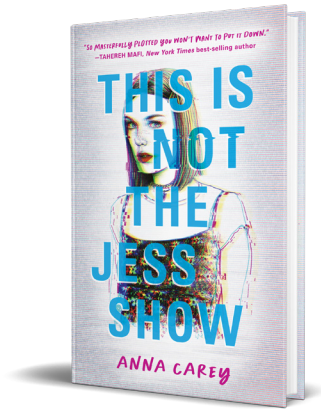
Gak

Super Soakers

Beanie Babies



LEARN MORE ABOUT THIS IS NOT THE JESS SHOW

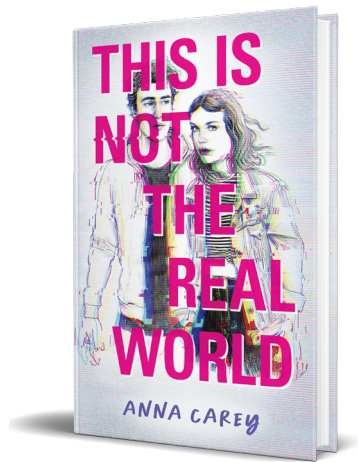


"AT ONCE THOUGHT-PROVOKING AND HILARIOUS, *THIS IS NOT THE JESS SHOW* IS A TIMELY, INCISIVE BOOK SO MASTERFULLY-PLOTTED YOU WON'T WANT TO PUT IT DOWN."

— Tahereh Mafi, New York Times best-selling author of the *Shatter Me* series and *A Very Large Expanse of Sea*

The year is 1998: *Titanic* just won six Oscars, boy bands are dominating MTV's airwaves, and like any other teenager Jess Flynn is just trying to survive high school. Between a crush on her childhood best friend, overprotective parents, and her sister's worsening health, the only constant is her hometown of Swickley, which feels smaller by the day.

Jess is resigned to her small-town life, until the day she discovers a mysterious device with an apple logo, causing her to question everything and everyone she's ever known. As more cracks appear in Jess's world, she faces a choice: can she live the rest of her life knowing it's a lie, or should she risk everything for the truth?



JESS'S STORY CONTINUES IN THE EXPLOSIVE CONCLUSION *THIS IS NOT THE REAL WORLD*, COMING IN SPRING 2022!



ABOUT THE AUTHOR

Anna Carey is the author of several books for teens including *This Is Not the Jess Show*, *This Is Not the Real World*, and the *Eve trilogy*. She lives in Los Angeles.